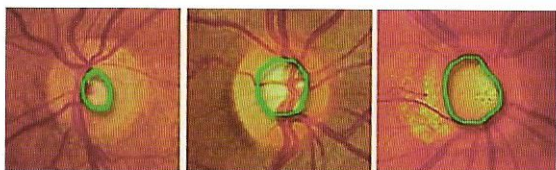


Why is it important to relieve intraocular pressure?

The eye's aqueous fluid is constantly produced and drained at a balanced rate to ensure the health of the lens and cornea. When this drainage becomes blocked, intraocular pressure increases and open-angle glaucoma (the most common form of glaucoma) occurs. In order to preserve eyesight, it is critical to decrease and control intraocular pressure.



The green ring outlining the gradual enlarging optic nerve "cup" shows the progression of the disease

What are my other treatment options?

- Drug therapy is the most common form of treatment for open-angle glaucoma; however, there are side effects, and medications aren't effective for all patients – and you have to remember to take your medicine every day.
- If non-surgical methods fail, surgery may be attempted to create a new drainage channel. Unfortunately, this is a highly invasive procedure with a risk of bleeding and infection.
- Argon laser trabeculoplasty was formerly the most widely used laser treatment for glaucoma. There are many problems associated with ALT, including irreversible damage to the eye, along with permanent scarring.